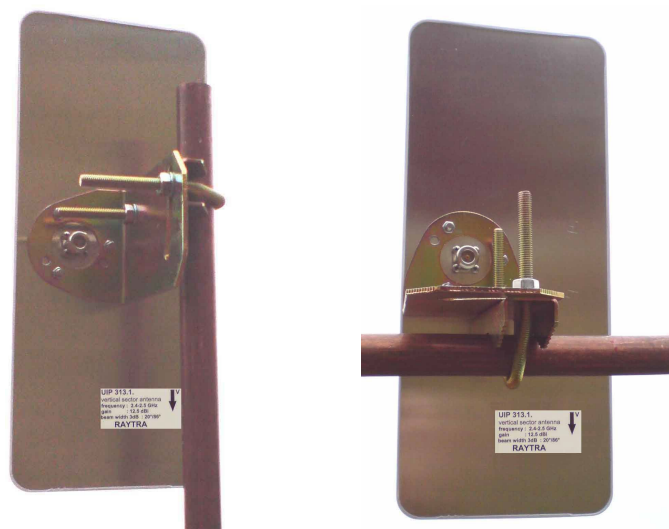


## WIFI ANTENNAS 2400-2500 MHz

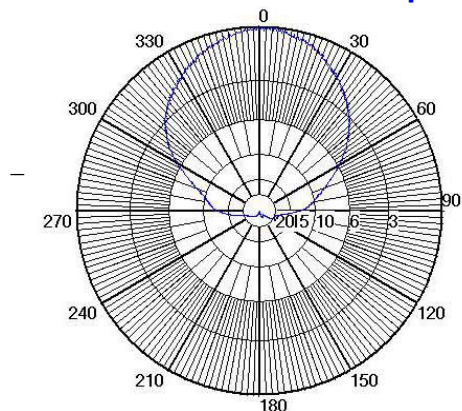
### Directional Planar Microstrip Antenna 2400-2500 MHz 13 dBi UIP 313.1

Electrical properties		UIP 313.10
Frequency range		2400 – 2500 MHz
VSWR		1.4
Gain [ dBi ]		13
Impedance		50 Ω
Polarization		Vertical
3 dB (6 dB) beam width Vert./ Hor.		20° / 90° (120°)
Max. power		20 W
Connector		Nf

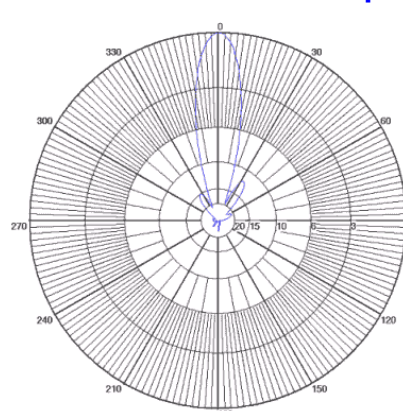
Mechanical properties	
Radome material	UV stable copolymer ABS-PMMA
Radome color	white
Height/Width/Depth [ mm ]	355 / 151 / 34
Weight	1.2 kg
Max. Wind velocity	200 km/h
Mounting	20-75 mm



Radiation Pattern Hpl



Radiation Pattern Epl



RAYTRA

Antenna Technologies

phone : 00420 604 553 126 email : [info@raytra.com](mailto:info@raytra.com)  
 fax : 00420 241 760 059 web : [www.raytra.com](http://www.raytra.com)

adress: Urbánkova 3358/43 , 14300 , Praha 4 , Czech republic