


Air Live®
www.ovislink.com.tw

WL-5480USB

802.11g WLAN USB Adapter

Quick Setup Guide



English ..

1



Czech ..

7

Powered by OvisLink Corp.

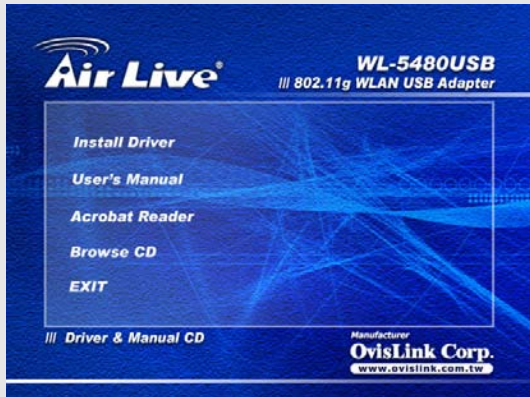
Install Utility Software

Note1: Before installing the utility software, **DO NOT** insert the **WL-5480USB** into your computer. If the adapter is inserted already, Windows will detect the adapter and request for a driver. Click **Cancel** to quit the wizard and remove the adapter from your computer.

Note2: If you have installed the USB adapter driver & utility already, please uninstall the old version first.

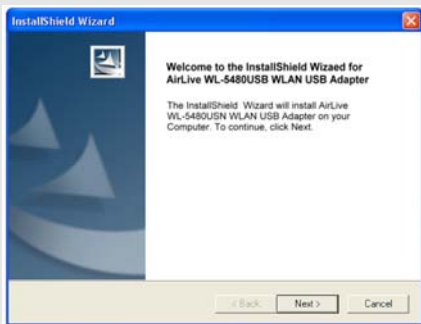
Step 1 Insert the provided Driver and Utility CD into your CD drive.

Step 2 Click Install Driver from the Setup menu.

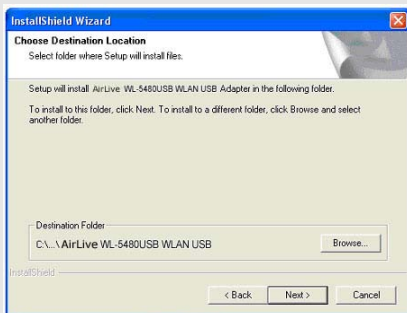


Note: If the Setup menu does not appear automatically goes to **Start, Run**, type **D:\autorun.exe** (where **D** is the letter of your CD drive) and click **OK**.

Step 3 When the welcome screen appears, click **Next**.



Step 4 Click **Next** to accept the default destination folder for the software or click **Browse** to manually select a different destination folder.®



Step 5 For Windows XP, click **Continue Anyway** at the Windows Logo Compatibility screen.



For Windows 2000, click **Yes** at the Digital Signature screen.



Step 6 Remove the Driver & Utility CD from your CD drive and then restart your computer.

Install Utility Software

Note: In most cases, Windows will automatically install the driver after the computer is restarted. If the Found New Hardware Wizard appears, follow the instructions below. The Found New Hardware Wizard will look different depending on your operating system. Follow the on-screen instructions to complete the installation. For Windows 98SE and ME users, you may be prompted to insert the Windows 98SE or ME CD during the driver installation. Be sure to have your Windows 98SE or ME CD ready.

Step 1 After the computer is restarted, insert the USB adapter into the USB port of the computer. If there is not enough room to insert the adapter directly to the USB port, you may use the supplied USB extension cable for more space.

Step 2 Select **Install the software automatically** and click **Next**.



Step 3 For Windows XP, click **Continue Anyway** at the Windows Logo Compatibility screen.



For Windows 2000, click **Yes** at the Digital Signature screen.



For Windows 98SE or ME, insert the Windows 98SE or ME CD if prompted to do so and click OK.

Step 4 Click **Finish**. Restart the computer if you are prompted to do so.

Configuring the WL-5480USB

To open the utility, go to **Start, (All) Programs, OvisLink WL5480USB WLAN USB Adapter, OvisLink WL5480USB WLAN USB Utility**.

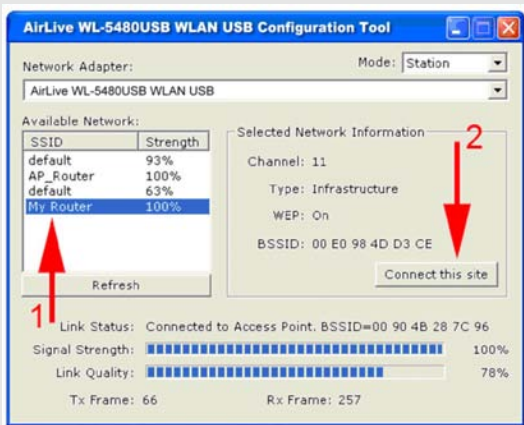


Note to Windows XP Users:

If you encounter the Wireless Zero Configuration dialog box, click **Yes** to enable the Wireless LAN Utility to configure your USB adapter.



Step 1 Select the **SSID** of your wireless router/access point from the Available Network list and click on the **Connect this site** button.



Step 2 Verify that the adapter has adequate **Signal Strength** and **Link Quality** and then restart the computer.

You have completed the configuration

For more advanced features and additional details, please refer to the User's Manual on the provided CD

Softwarová instalace

- 1: Před instalací software nepřipojujte zařízení **WL-5480USB** do vašeho počítače. Pokud tak učiníte, stornujte požadavek systému na ovladač a zařízení odpojte.
- 2: Pokud máte již v počítači nainstalovaný jiný USB síťový adaptér, tak před započatím instalace prosím odinstalujte všechny starší verze.

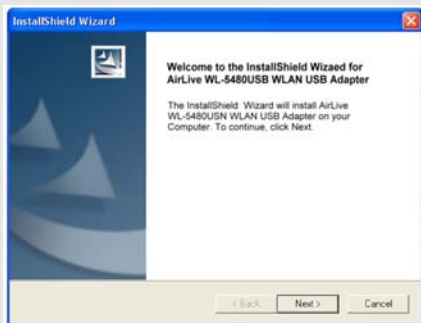
Krok 1 Vložte CD s ovladači do mechaniky CDROM.

Krok 2 Zvolte položku Install Driver.

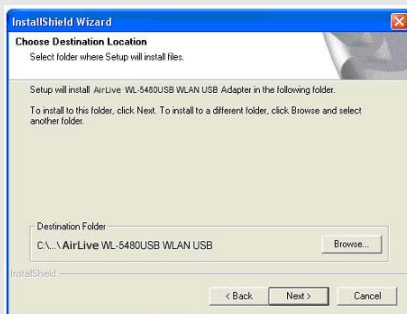


Tip: Pokud se CD nespustí automaticky, spusťte ho manuálně, **Start, Spustit**, zadejte **D:\autorun.exe** (**D** je písmeno vaší CD mechaniky) a stiskněte **OK**.

Krok 3 Postupujte podle pokynu, stiskněte **Next**.



Krok 4 Stiskněte **Next** pokud souhlasíte s umístěním adresáře, jinak stiskem **Browse** zvolte jiné umístění.



Krok 5 Ve Windows XP, stiskněte **Continue Anyway** na stránce Windows Logo Compatibility.

Software Installation



The software you are installing has not passed Windows Logo testing to verify its compatibility with Windows XP. [\(Tell me why this testing is important.\)](#)

Continuing your installation of this software may impair or destabilize the correct operation of your system either immediately or in the future. Microsoft strongly recommends that you stop this installation now and contact the software vendor for software that has passed Windows Logo testing.

Continue Anyway

STOP Installation

Ve Windows 2000, stiskněte **Yes** v obrazovce Digital Signature

Digital Signature Not Found



The Microsoft digital signature affirms that software has been tested with Windows and that the software has not been altered since it was tested.

The software you are about to install does not contain a Microsoft digital signature. Therefore, there is no guarantee that this software works correctly with Windows.

If you want to search for Microsoft digitally signed software, visit the Windows Update Web site at <http://windowsupdate.microsoft.com> to see if one is available.

Do you want to continue the installation?

Yes

No

More Info

Krok 6 Vyjměte CD s ovladači z mechaniky a restartujte počítač.

Instalace softwarových utilit

Tip: Systém Windows po restartu automaticky nainstaluje potřebné ovladače do vašeho počítače. Uživatelé systému Windows 98SE a ME budou s největší pravděpodobností potřebovat k instalaci adaptéru také instalační CD operačního systému.

Krok 1 Po restartu připojte adaptér do USB Portu vašeho počítače.

Krok 2 Zvolte možnost **Install the software automatically** a stiskněte **Next**.



Krok 3 Ve Windows XP, stiskněte **Continue Anyway** v obrazovce Windows Logo Compatibility.



Ve Windows 2000, stiskněte **Yes** v obrazovce Digital Signature



Krok 4 Stiskněte **Finish** a restartujte váš počítač.

Konfigurace WL-5480USB

Spustěte utilitu, **Start, Programy, OvisLink WL5480USB WLAN USB Adapter, OvisLink WL5480USB WLAN USB Utility.**



Tip: Pokud se vám zobrazí ve Windows XP dialogové okno Wireless Zero Configuration tak zvolte **YES**

Wireless Zero Configuration

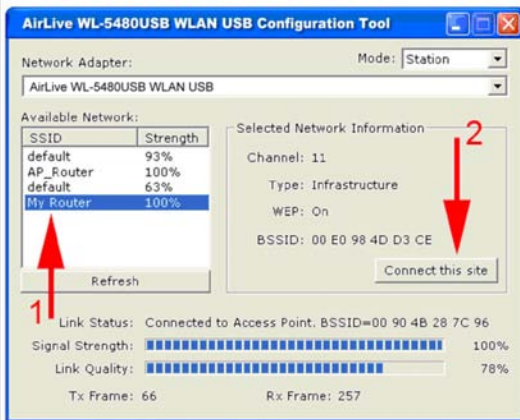


Wireless LAN is Controlled by the Windows Zero Configuration.
Do you want to use WLANUtil as the Wireless LAN configuration tool?

Yes

No

Krok 1 Zadejte **SSID** vašeho bezdrátového routeru nebo access pointu z listu dostupných sítí a stiskněte tlačítko **Connect this site**.



Krok 2 Ověřte si sílu signálu a kvalitu spojení.

Vaše konfigurace je kompletní



OvisLink Corporation declares that this device is
in compliance with the essential requirements and
other relevant provisions of directive 1999/5/EC



Tested To Comply
With FCC Standards
FOR HOME OR OFFICE USE



OvisLink Corp.

2F, NO.8 Lane 130, Min Chuan Road, Hsin-Tien City Taipei, Taiwan